



# 4<sup>th</sup> International Summer School on Emerging Technologies in Biomedicine

## Advanced Methods For The Estimation Of Human Brain Activity And Connectivity, Applications to Rehabilitation Engineering

Sponsored by COST Action BM0601



June 29<sup>nd</sup>-July 4<sup>th</sup>, 2008  
University of Patras, Greece

### Topics

Non Invasive Neuro-Electric and Hemodynamic Measurements

Functional Multimodal Neuro-Imaging Techniques

Advanced Brain Signal Processing Techniques

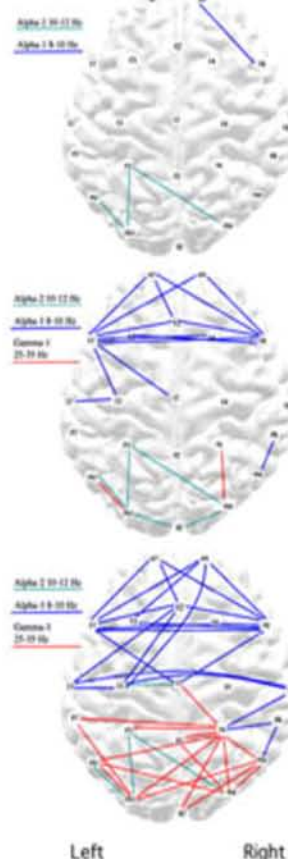
Forward and Inverse Problem Methodology in EEG/MEG

Methodologies for Brain Activity and Connectivity Analysis

Interfaces between Brain and Computers

Rehabilitation Technologies in Paraplegics

Wearable Biosensor Technology

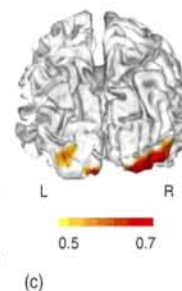
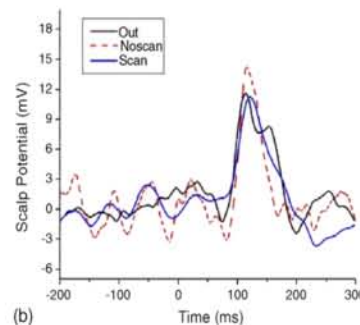
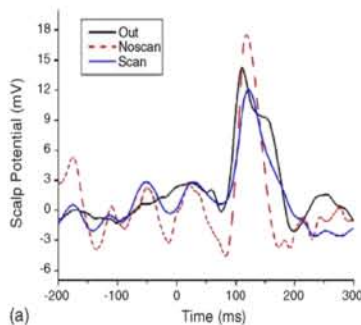


### Tools

Oral Presentations

Meeting with the experts

Hands-on Tutorials



Contacts: Dept. of Medical Physics, Univ. of Patras, GR 265 00

Tel. +30-2610-969145, +30-2610-969146, +30-2610-969147

Fax: +30-2610-992496

Email: [school2008@heart.med.upatras.gr](mailto:school2008@heart.med.upatras.gr)

<http://heart.med.upatras.gr/school2008>

